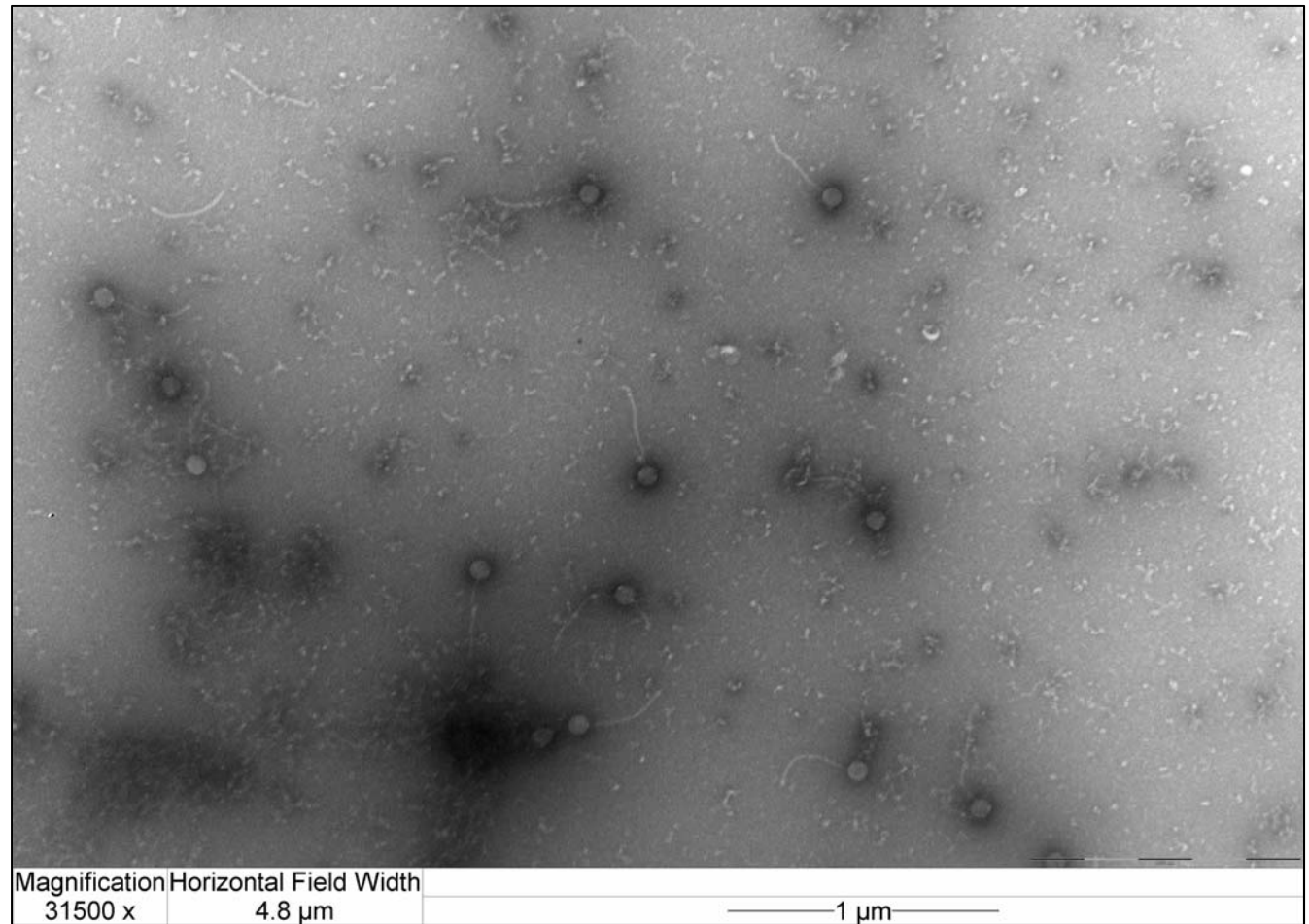
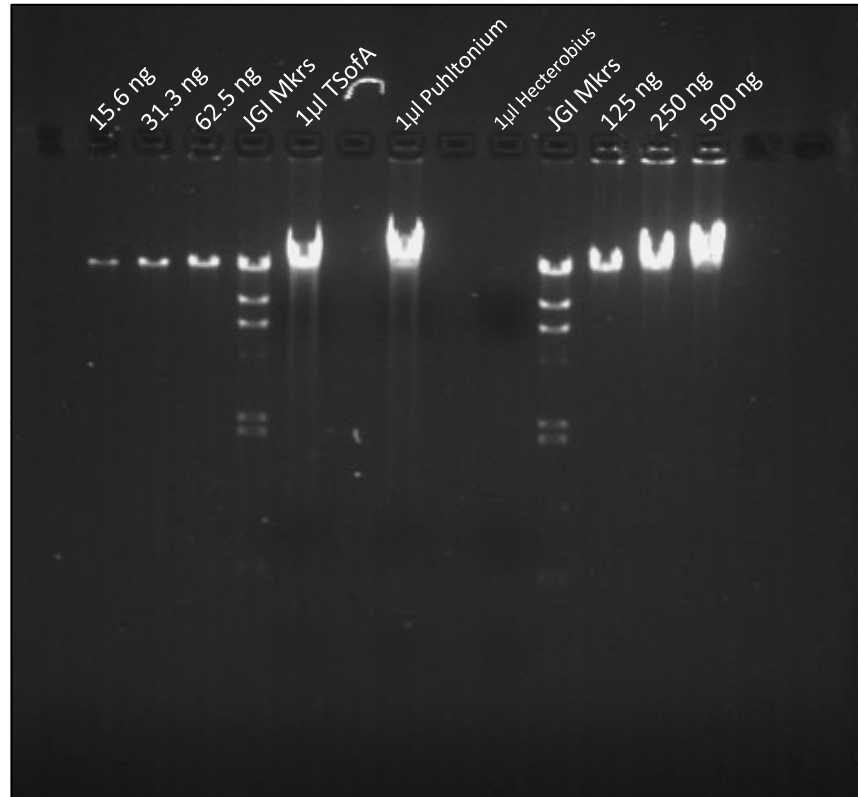


A.

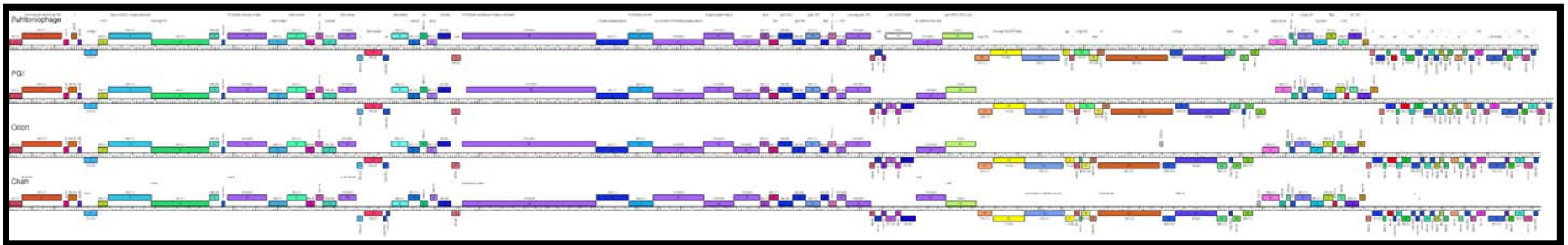


B.

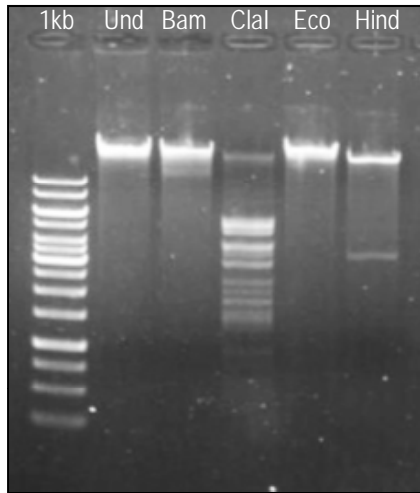
Mycobacteriophage “Puhltonio” – Isolated by a student at UMBC. A. Lanes 1 and 2 contain 1kb standards and 0.5 µg undigested phage DNA. Lanes 3-6 contain 0.5 µg phage DNA digested with 10 units of the indicated restriction enzyme for approximately two hours at 37°C. B. Transmission electron micrograph of mycobacteriophage “Puhltonio” stained with uranyl acetate



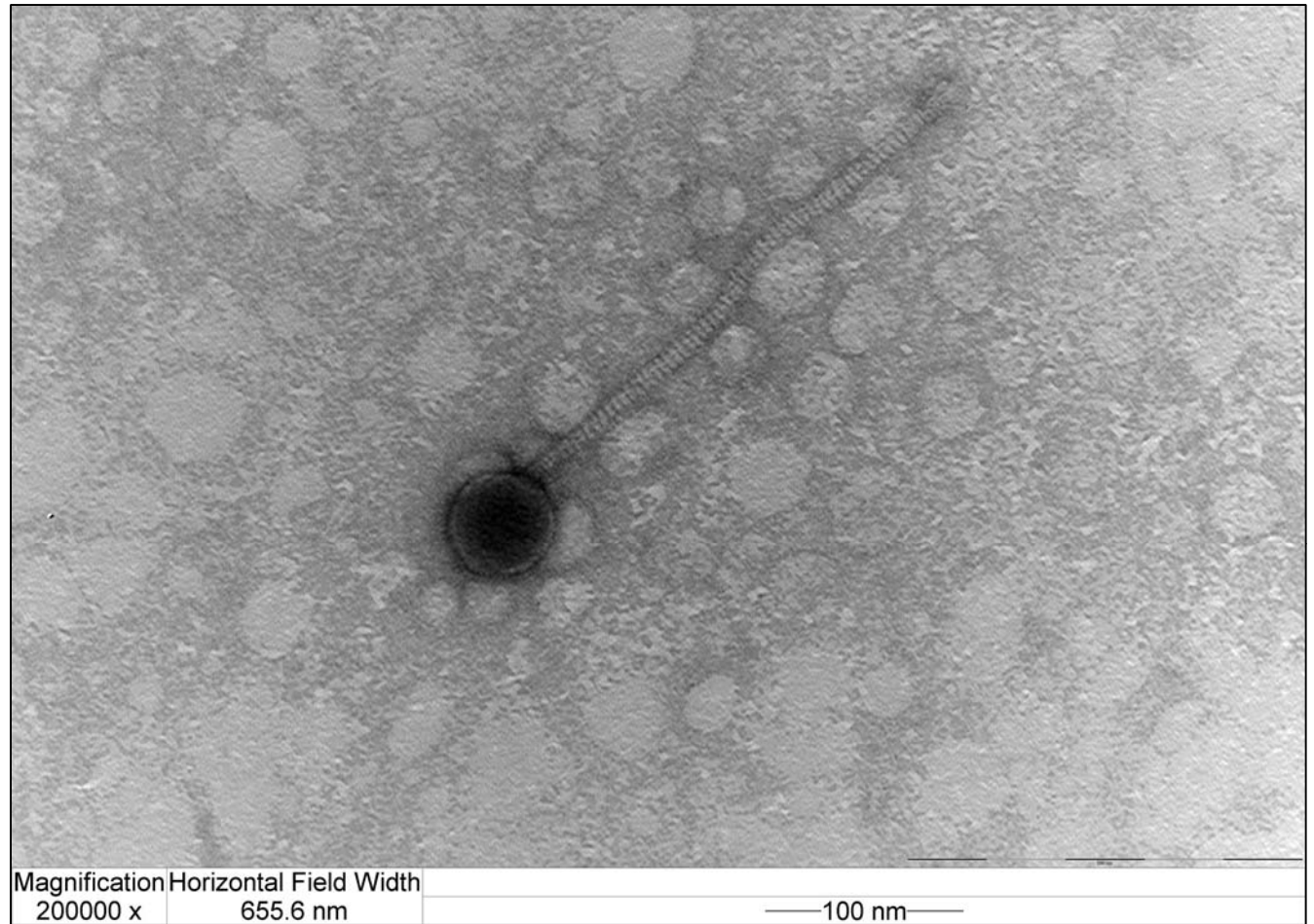
JGI quality control gel. Lanes 1-3 and 11-13 contain the indicated mass of lambda DNA, as provided by JGI, lanes 4 and 10 contain JGI provided Marker 2 Lambda standards, lane 5 contains 1 µl "The Shadow of Arin", lane 7 contains 1 µl "Puhltonio", and Lane 9 contains 1 µl "Hecterobius."



Mycobacteriophage “Puhltonio” aligned with similar mycobacteriophage using Phamerator.



A.



B.

Mycobacteriophage "Nastio" – Isolated by a student at UMBC. A. Lanes 1 and 2 contain 1kb standards and 0.5 μ g undigested phage DNA. Lanes 3-6 contain 0.5 μ g phage DNA digested with 10 units of the indicated restriction enzyme for approximately two hours at 37°C. B. Transmission electron micrograph of mycobacteriophage "Nastio" stained with uranyl acetate