

Volume 1 Fall Issue

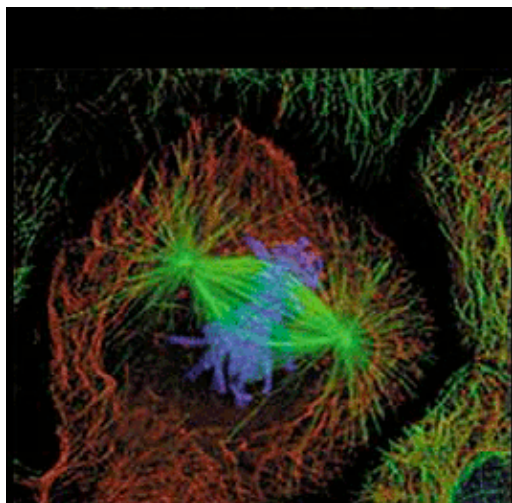


Table of Contents

Use Arrows to Browse
Previous Issues

Contact CBE

8120 Woodmont Avenue Suite
750
Bethesda, Maryland 20814-
2762

Phone: (301) 347-9300
Fax: (301) 347-9350
cbe@ascb.org



[Editorial Board Member Login](#)

FEATURES

- **Approaches to Cell Biology Teaching: Questions about Questions**
by Deborah Allen and Kimberly Tanner
- **WWW.Cell Biology Education**
by Robert Blystone
- **Meeting Report: Genomics in the Undergraduate Curriculum--Rocket Science or Basic Science?**
by A. Malcolm Campbell
- **Book Review: Tried, Revised, and Tried Again--A Seasoned Textbook for Undergraduates**
by Christopher Watters
- **Book Review: Guidebook to Modern Microscopy**
by J. Richard McIntosh

ARTICLES

- **Glucose Transport in Cultured Animal Cells: An Exercise for the Undergraduate Cell Biology Laboratory**
by Mary Lee S. Ledbetter and Malcolm J. Lippert
- **But Are They Learning? Getting Started in Classroom Evaluation**
by Melissa H. Dancy and Robert J. Beichner

Supported in part by an Undergraduate Science Education Program grant from the Howard Hughes Medical Institute

ANNOUNCEMENTS

September 3–7, 2005, Sydney, Australia
15th International Society of Developmental Biologists Congress

Submit Your Manuscript
Online Manuscript Submission

- **Instructions to Authors**
- **Top Ten Reasons to Publish in CBE** [pdf]

Other Information:

There are **6,450** registered users signed up to receive quarterly notification of new content.

[Become a registered user.](#)

Order a Free CBE Poster

On the Cover [[Printable Cover](#)]



Metaphase: a newt lung cell examined by 3-D fluorescence deconvolution light microscopy. Cells in culture were stained for indirect

immunofluorescence localization of keratin filaments (red), microtubules (green), and with a fluorescent dye to reveal the chromosomes (blue). The spindle is fully formed and all of the chromosomes are bioriented (attached to opposing poles) and aligned on the equator. —*Dr. Conly L. Rieder and Dr.*

*Alexey Khodjakov, Division of Molecular
Medicine, Wadsworth Center, New York
State Department of Health.*

Copyright © 2001-2006 by The American Society for Cell Biology