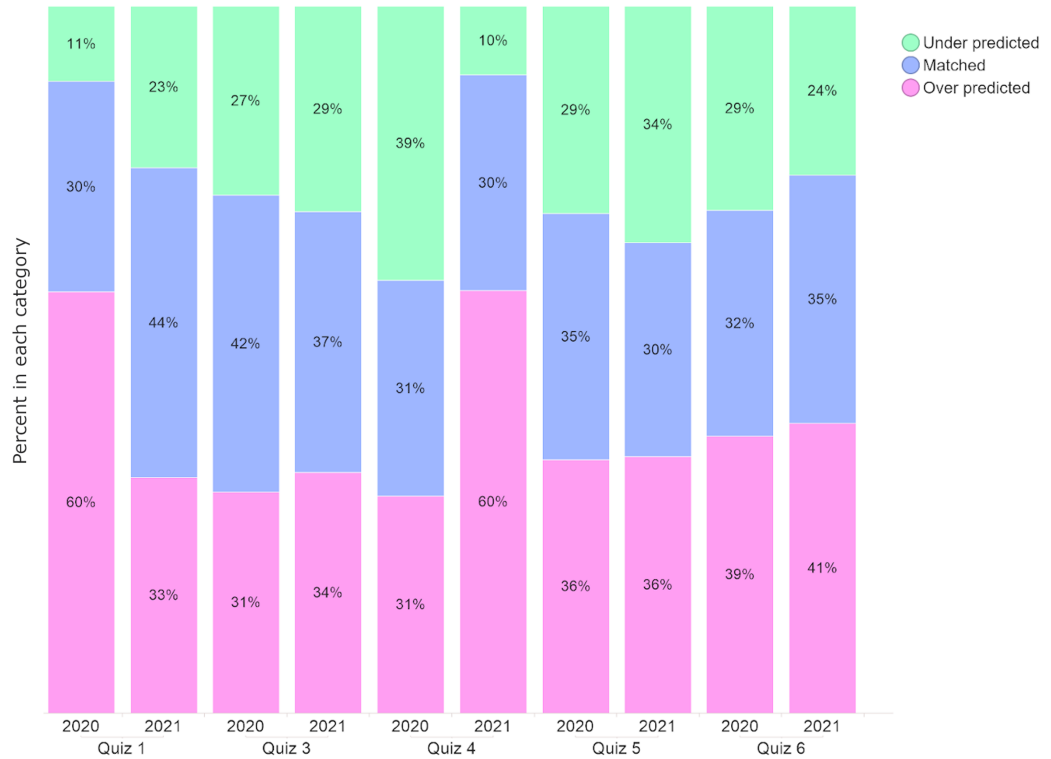


Supplemental Material

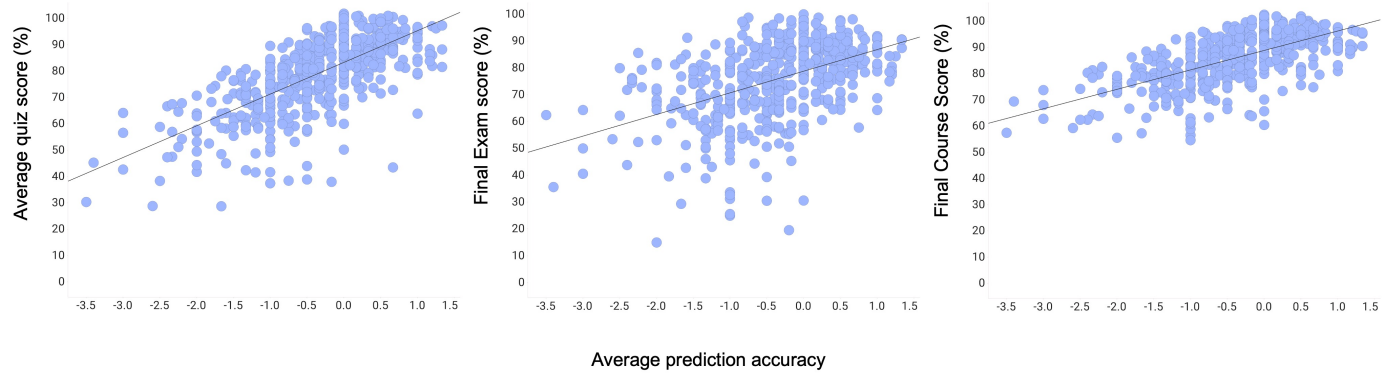
CBE—Life Sciences Education

Knight *et al.*

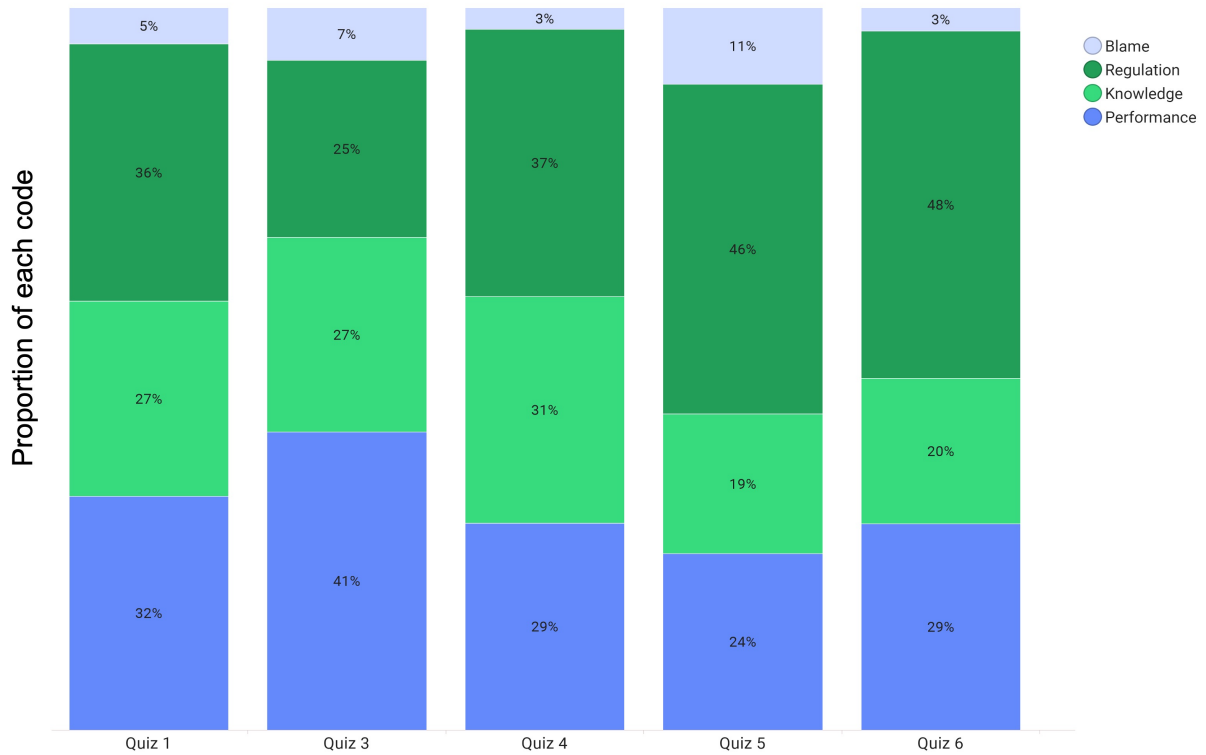
Supplementary Materials



Supplementary Figure 1. Percent of students who underpredicted, matched and overpredicted for each quiz. The only significant differences between quizzes or years are for Quiz 1 2020 and Quiz 4 2021. For these two quizzes, there were significantly more overpredictors than the matching quiz from the other year (chi square, $p < 0.001$). Otherwise, the proportion of under, matched and overpredictors does not differ by quiz or year (chi square, $p > 0.05$).



Supplementary Figure 2. Students' average quiz prediction accuracy is significantly correlated (linear regression; $p < 0.001$) with average quiz accuracy ($r = 0.69$, $r^2 = 0.48$), final exam grade ($r = 0.46$, $r^2 = 0.21$) and overall course grade ($r = 0.64$, $r^2 = 0.40$). $n = 497$



Supplementary Figure 3. Proportion of Performance, Knowledge, Regulation and Blame codes out of total codes for each quiz. A single student response can have more than one code. Quiz 1: 295 codes; Quiz 3: 618 codes; Quiz 4: 204 codes; Quiz 5: 517 codes; Quiz 6: 524 codes. The distributions of different codes are not different across quizzes; chi square, $p > .05$.