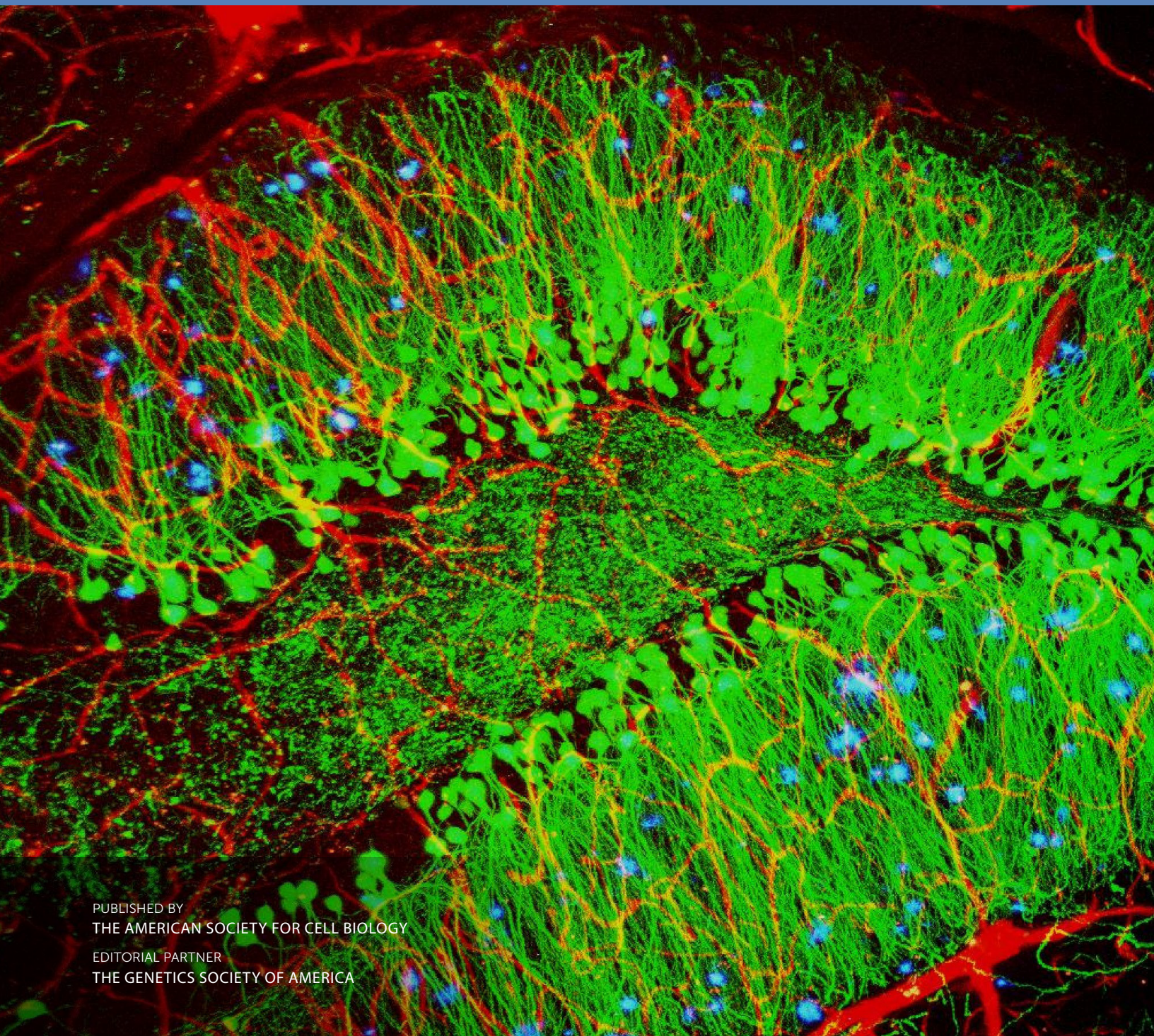


# LSE

## CBE—LIFE SCIENCES EDUCATION

VOLUME 17 • WINTER 2018 • [www.lifescied.org](http://www.lifescied.org)



PUBLISHED BY  
THE AMERICAN SOCIETY FOR CELL BIOLOGY  
EDITORIAL PARTNER  
THE GENETICS SOCIETY OF AMERICA